

JUST WHAT IS *ClassMate*?

ClassMate has the following features:

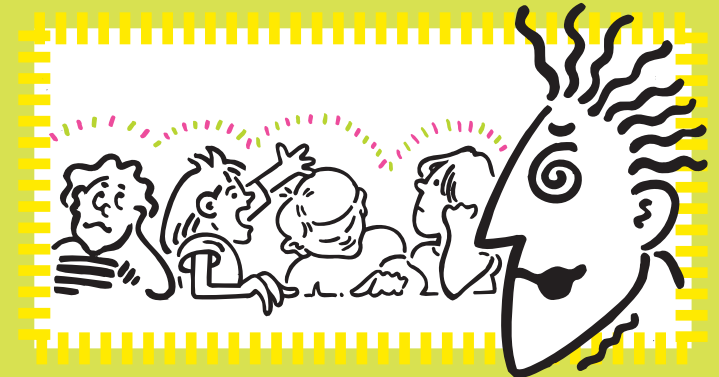
- The teacher's voice is projected through 1 or more carefully positioned speakers
- Teacher uses either a head-worn or lapel microphone
- The sound is a high quality FM signal that comfortably reaches all the children in the room.
- ClassMate can be used with other audio-visual equipment.
- A hand held microphone is included; and highly recommended for the use of children in news sessions, reading-aloud and around-the-room discussion.
- Easy change of up to 16 frequencies avoids transmission between rooms.



- Wall Brackets
- Hand held mic
- Body Pack Transmitter
- Speaker
- Smart Charger
- Lapel mic
- Head mic

Warranty : 1 year (hand-held microphone and rechargeable batteries excluded).

What's the question?
That's MY pen!
big or pig?
When's the Bell?
Bart's funny!
Who said that?



CLASSROOM LISTENING PROBLEMS?



To purchase Classmate contact:

Tel : 08 8948 4444
Fax: 08 8930 9003
damien@eartroubles.com

www.eartroubles.com



www.eartroubles.com

ClassMate

CLASSROOM CHALLENGES

Achieving an optimal listening & learning environment is difficult in many classrooms. School-based research has identified these challenges:

- Reverberation, or “echo” reduces speech clarity
- Background noise – from outside the school, between classes and, of course, the class itself
- Distance – high pitched speech components of the teacher’s voice are essential for meaning and clarity, however, diminish quickly over distance, even in a quiet room

Many children will require a higher than average teacher voice-to-noise ratio for basic learning. These include children with:

- Learning delays
- Central Auditory Processing Disorder
- Primary languages other than English
- Fluctuating hearing loss from “glue ear”
- ADHD

TEACHERS’ VOCAL STRAIN & DAMAGE

School teachers are among the highest risk categories of occupations for vocal abuse, nodes and related surgery. The main reasons for this are the acoustic environment and added challenge of educating a room of children.



HOW *ClassMate* HELPS

ClassMate sound field amplification is designed to address these challenges by:

- gently amplifying the teacher’s voice for optimal learning
- overcoming the disadvantage of teacher-student distance by projecting the teacher’s voice **evenly** across the room
- providing easier control of children, even large groups

SCHOOL SUPPORT

Ongoing support is available by phone or email, typically to discuss optimal usage, troubleshooting and any issues of importance to schools. Assistance may be made by way of research articles and texts. Our staff members are available by appointment for presentations at schools and other settings.

ClassMate BENEFITS

Children:

Research in North America and Australia over the last 20 years has shown that quality sound field amplification linked with teacher in-servicing results in:

- increased attentiveness and on-task behaviour
- improved academic achievement

Teachers:

- Increased effectiveness in the classroom environment
- Reduced risk of vocal abuse
- Reduced physical effort required when talking with class

Parents:

- Child learning and interest enhanced by optimal teacher voice-to-noise ratio, plus student use of microphone
- Widely recommended tool for learning challenged and disabled children

Whole School:

At 2.5 kilos, ClassMate is **PORTABLE** and able to be used within and outside school as follows:

- any class, or a number of classes throughout the day
- school sports and excursions
- assemblies and meetings
- hand-held microphone for student use e.g. news-reading
- buses and other school vehicles